

Project:	
Type:	Catalog #:



### FEATURES:

– For wall mounted vanity, task or restroom applications, providing a contemporary design with convenient installation. Optimized performance for T8 lamp technology.

### SPECIFICATIONS:

**HOUSING** – Heavy gauge, cold-rolled steel. One-piece end caps fastened with acorn nut. Knockouts are provided for flexible conduit attachment. Fixture available in one or two lamp configurations.

**FINISH** – Multi-stage phosphate treated for maximum adhesion and rust resistance. Finished with high-gloss, baked white enamel. Chrome finish or chrome end caps with white housing available.

**DIFFUSER** – Snap-in ribbed white acrylic lens is standard. Clear prismatic acrylic lens available.

**ELECTRICAL** – Energy efficient, thermally protected, Class P, HPF, sound rated A, UL Listed, electronic ballasts are standard on all models. Provided with pushwire wallnuts or ballast disconnects for convenient installation.

**LISTINGS** – UL Listed (standard).

### Ordering Matrix and Options

**Example: VWB W 232 UNV EB EM**

**VWB** Product Series  
VWB = Rounded Ends Wall Bracket

Finish  
W = White  
C = Chrome  
CE = Chrome ends only (with white housing)

# of Lamps (per Cross Section)  
1 = 1-lite  
2 = 2-lite

Lamp Type  
15T8 = 15w T8 (18")  
17T8 = 17w T8 (24")  
25T8 = 25w T8 (36")  
28T8 = 28w T8 (48")  
32T8 = 32w T8 (48")  
(Consult factory for other options)

Diffuser Type  
(blank) = Smooth white opal lens  
RW = Ribbed white acrylic lens  
CP = Clear prismatic acrylic lens  
(Consult factory for other options)

Voltage  
120 = 120V  
277 = 277V  
UNV = 120 to 277V  
(Others available)

Ballast and Options  
EB = Electronic ballast, < 10% THD  
EB10IS = Electronic ballast, < 10% THD, instant start  
EB10RS = Electronic ballast, < 10% THD, rapid start  
EM = Emergency battery pack  
CO = Convenience outlet  
PS = Pull chain switch  
DS = Ballast/luminaire disconnect  
LPI ( ) = Lamp included (specify lamp type and color)  
(Consult factory for other options)  
See supplemental page for option details.

Manufacturer reserves the right to make changes to specifications without notice.

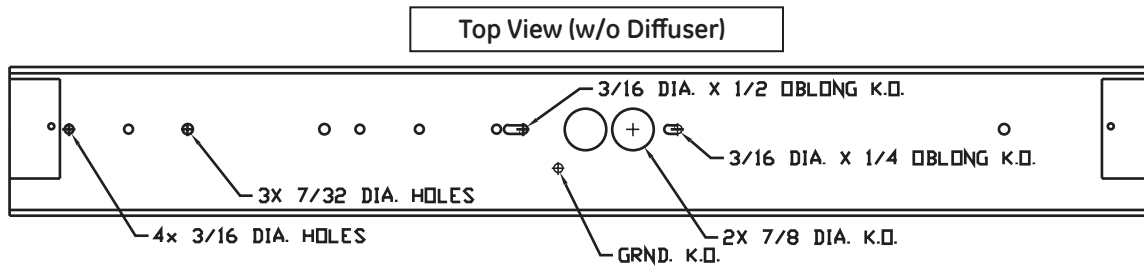
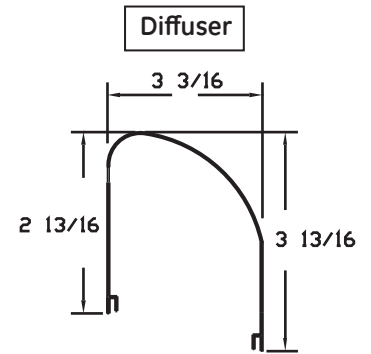
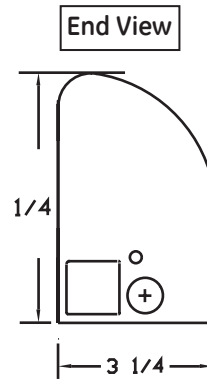
# VWB

Vanity Wall Bracket

Project:	
Type:	Catalog #:

## Dimensions

Model Configuration	Height	Depth	Length
VWB 115 / VWB 215	3-1/4"	5-1/4"	18-1/4"
VWB 117 / VWB 217	3-1/4"	5-1/4"	24-1/4"
VWB 125 / VWB 225	3-1/4"	5-1/4"	36-1/4"
VWB 132 / VWB 232	3-1/4"	5-1/4"	48-1/4"



Manufacturer reserves the right to make changes to specifications without notice.